



VP SERON / CUMMINS

(VP SERON/CUMMINS) GENSET

22-1100kW

ENGINE

JV CUMMINS engine multi-cylinders, four-stroke, direct injection, water-cooled, naturally aspirated or turbocharged, mechanical or electronic govern or speed 1500rpm/1800rpm diesel fuelled for industrial application.

ALTERNATOR

Wuxi STAMFORD/ Shanghai MARATHON alternator, rotating, brushless, single bearing, P.M.G. or self-exciting self-regulating, class H insulation, three phase four wire, 0.8 P.F lag, AVR module with +/-1% static volt regulation.

CONTROL SYSTEM

Local panel with special designed V&P controller c/w manual/remote start and stop. It incorporates basic fault warning and shutdown protection features, LCD/LED display of engine running parameters and status. Other functions like excitation control and remote monitoring can be supplied as option.

SKID

Engine, alternator radiator and control panel are mounted on a fabricated base, all welded steel construction c/w lifting hook

PROTECTION SYSTEM

Standard protection functions as follows:

- High water temperature warning and shutdown
- Low oil pressure warning and shutdown
- Over crank warning and lockout
- Over speed warning and shutdown
- Under speed warning and shutdown
- Fail to start warning
- Over-Current protection(optional)
- Over-Voltage protection(optional)

FILTERING SYSTEM

Dry element air filter with spin-on paper element type water, fuel and lub oil filter

STARTING SYSTEM

24V DC starting system engine driven battery charging dynamo.

EXHAUST SYSTEM

Flexible exhaust pipe and industrial silencer are supplied as optional

WARRANTY

1 year standard warranty

RADIATOR

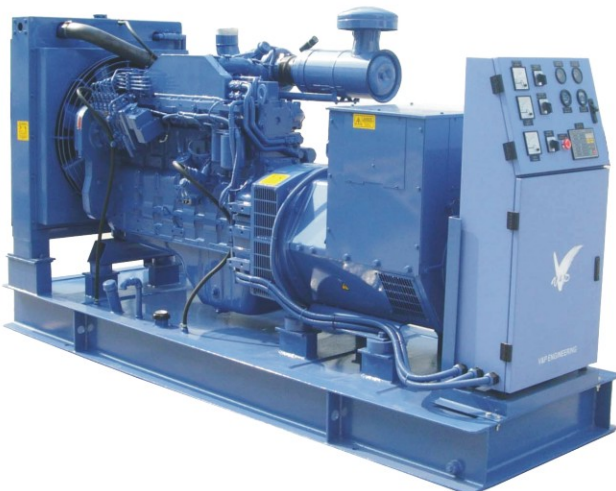
Set-mounted radiator with engine driven cooling fan and water pump, radiator mounted on the skid, suitable for 40°C tropical environment application

ACCESSORIES(OPTIONAL)

- Acoustic canopy
- Trailer for mobile genset
- Remote communication
- Outgoing breaker
- Heat exchanger
- remote radiator
- Battery float charger
- Day tank or base tank
- Water heater
- Anti-condensation heater
- Fuel water separator
- Remote annunciator
- Ni-Cad batteries
- Paralleling system
- Changeover system

BATTERY

24V acidic batteries



VP SERON / CUMMINS

(VP SERON/CUMMINS) GENSET

(230/400 V

1500RPM

50Hz)

VP SERON/CUMMINS		Rated Power (KW)		Genset Size & Weight			
Genset Model	Engine Model	Prime	Standby	Length (mm)	Width (mm)	High (mm)	Weight (Kg)
VPC22C	4B3.9-G2	20	22	1950	800	1400	750
VPC34C	4BT3.9-G2	31	34	2000	800	1450	850
VPC44C	4BTA3.9-G2	40	44	2100	880	1450	980
VPC64C	6BT5.9-G2	58	64	2550	900	1475	1160
VPC88C	6BT5.9-G2	80	88	2550	900	1475	1245
VPC100C	6BTA5.9-G2	90	100	2550	920	1475	1296
VPC110C	6BTAA5.9-G2	100	110	2550	920	1475	1440
VPC165C	6CTA8.3-G2	150	165	2650	960	1550	1756
VPC185C	6CTAA8.3-G2	168	185	2650	960	1550	1958
VPC200C	MTA11-G2A	180	200	3000	1000	1550	2280
VPC220CL	6LTAA8.9-G2	200	220	2650	960	1550	2008
VPC220C	NT855-GA	200	220	3140	1100	1555	2700
VPC230C	MTA11-G2A	210	230	3140	1100	1555	2793
VPC270C	NTA855-G1A	245	270	3140	1100	1555	3057
VPC285C	MTA11-G3	260	285	3140	1100	1555	3152
VPC300C	NTA855-G2A	270	300	3140	1100	1555	3155
VPC310C	NTA855-G4	280	310	3220	1200	1620	3170
VPC330C	NTAA855-G7	300	330	3325	1400	1750	3295
VPC340C	KTA19-G2	310	340	3400	1500	1970	3895
VPC360C	NTAA855-G7A	320	360	3325	1400	1750	3310
VPC400C	KTA19-G3	360	400	3400	1500	1970	3998
VPC450C	KTA19-G4	400	450	3400	1500	1970	4878
VPC505C	KTAA19-G5	460	505	3550	1600	2220	5080
VPC530C	KTAA19-G6	480	530	3550	1600	2220	5090
VPC550C	KTAA19-G6A	500	550	3550	1600	2220	5230
VPC560C	KT38G	510	560	4500	2000	2280	7250
VPC660C	KTA38-G2	600	660	4500	2000	2280	7526
VPC800C	KTA38-G2A	720	800	4500	2000	2280	7724
VPC900C	KTA38-G5	820	900	4820	2200	2300	7936
VPC1000C	KTAA38-G9A	900	1000	5210	2200	2400	8960
VPC1100C	KTAA38-G9A	1000	1100	5220	2200	2400	9210

※Design according to:BS5514/ISO8528(KW×1.25=KVA)

Specification may change without notice



Singapore • HongKong • Shenzhen • Shanghai • Beijing

Authorised Dealer:



VP SERON Engineering(Shenzhen)LTD.